

Rock Solid Risk Management of your Corporate Real Estate

CRE Site Selection and Asset Monitoring

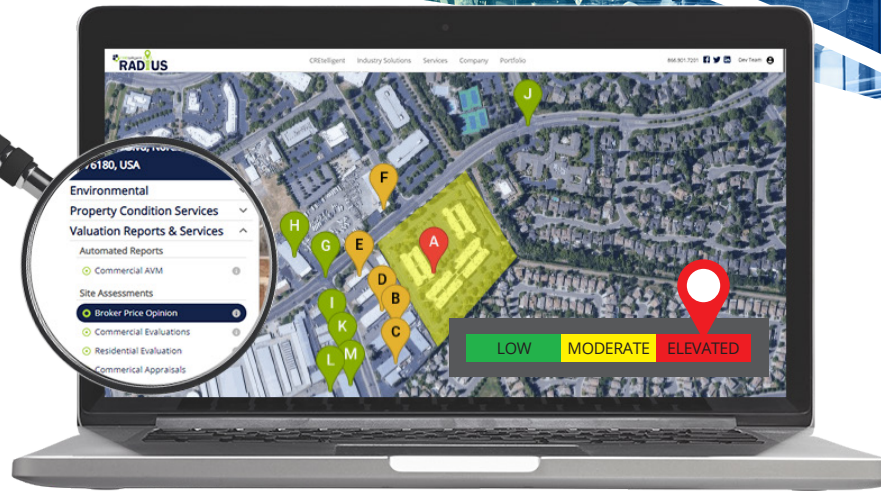
Acquiring and managing commercial real estate is critical to your business. Not only does your real estate support your operations, but it is an asset that contributes to your bottom line when managed properly.

Start off right by identifying the best available CRE assets for acquisition with RADIUS, a suite of cost-effective tools that help you get answers quickly on environmental and other property conditions and insights.

A New Way to Manager your Corporate Real Estate:

- Reduce site selection time and costs
- Identify and eliminate suspect properties early
- Get instant property environmental risk ratings
- Easily monitor your properties over time
- Easily escalate investigations while controlling costs
- Get other property insights on RADIUS

In addition to a suite of environmental tools, RADIUS is a one-stop platform where you can order, receive, and archive property inspections, valuation reports, land surveys, zoning reports, climate reports (coming soon), and more.



Site Selection Just Got Easier

Preacquisition site research is a time-consuming endeavor. While selecting the ideal site is the goal, eliminating suspect sites early in the process can save valuable time, costs and resources.

CREtelligent's EnviroPreScreen (EPS) provides an instant view into a property's environmental conditions including a risk rating and key areas of concern. Enter a property address on the RADIUS platform, request an EPS reports, and results are delivered back to you in seconds.

EnviroPreScreen allows you to eliminate properties from your acquisition shortlist and can even include an opinion of next steps actions to further your research.

It's on the Books Now

You've acquired the best CRE assets. Monitoring those assets would be the logical next step. But that's never been easy, especially across your entire portfolio.

Until now. With RADIUS, you can easily upload all your properties and receive a risk rating and details when conditions change on or around your properties. Monitoring your corporate real estate will never be easier.