

HONIGMAN

Law Firm Honigman Relies on CREtelligent for ALTA Land Surveys

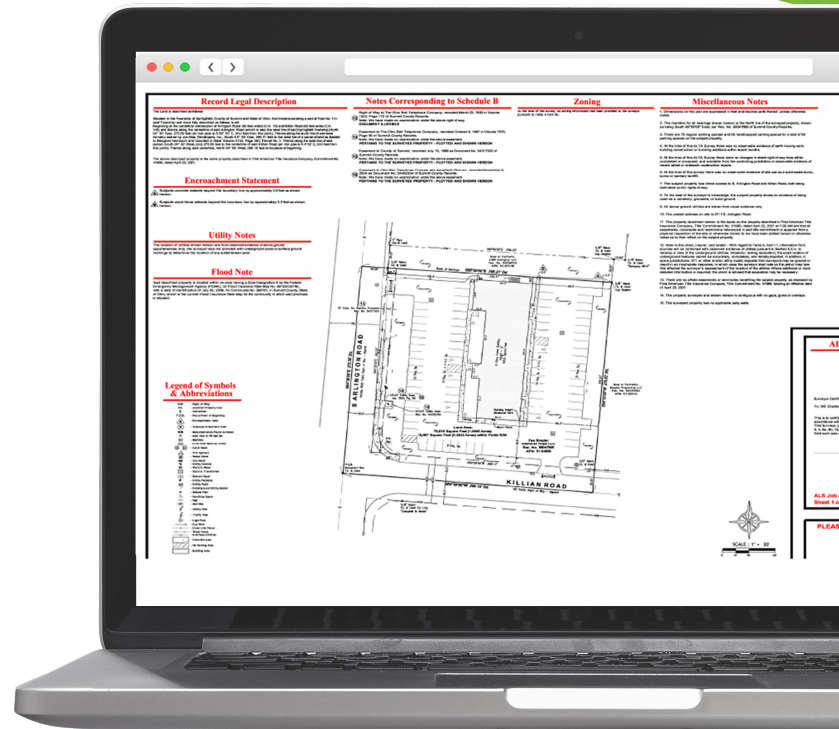
Renee Naylor, a Partner with the business law firm Honigman LLP, has relied on CREtelligent for land surveys for more than three years. Renee has upwards of 20 transactions ongoing simultaneously across the nation and it's important to keep everything moving, especially third-party reports they rely on.

The surveys we receive are top quality in terms of the level of research, and my point person is super responsive and knowledgeable.



— Renee Naylor
Partner at
Honigman LLP

The firm uses land surveys to support its clients' title exams and insurance needs. "I feel very comfortable when dealing with CREtelligent. The surveys we receive are top quality in terms of the level of research, and my point person is super responsive and knowledgeable," said Naylor. "They also are able to handle projects nationwide."



When it comes to owning real estate, land surveys play a crucial role in establishing and protecting ownership. Land surveys are one of the most crucial pieces of diligence and are used to secure the title insurance needed when a transaction is financed through a lender.

"I would recommend CREtelligent to any legal firm involved in CRE, especially those with a nationwide client base. They are always competitive from a cost and turn-time perspective and I get tremendous value from the service team. In fact, I recently recommended them to a client for a Phase I ESA and PCA, and their experience was what I'd expect from CREtelligent."

